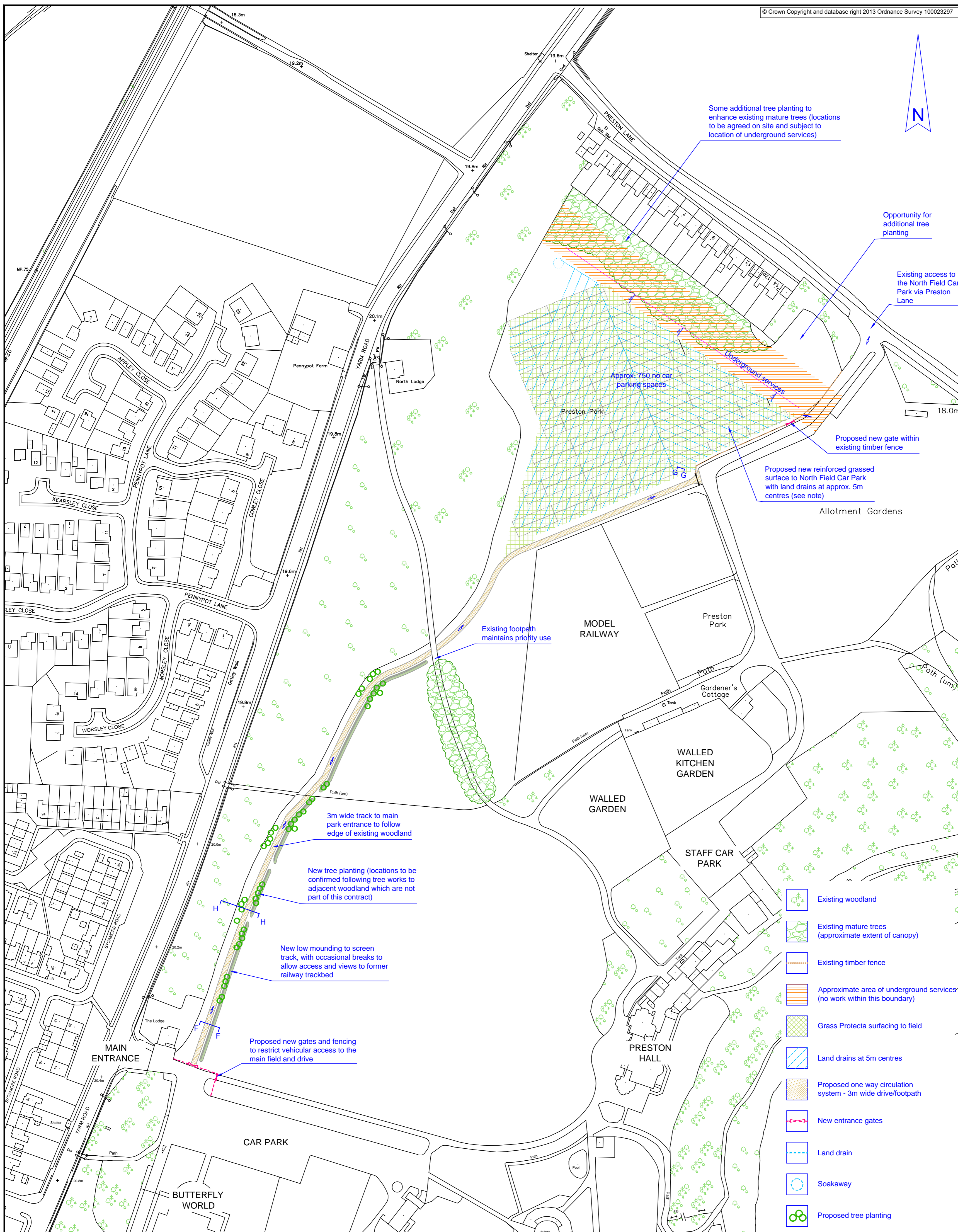
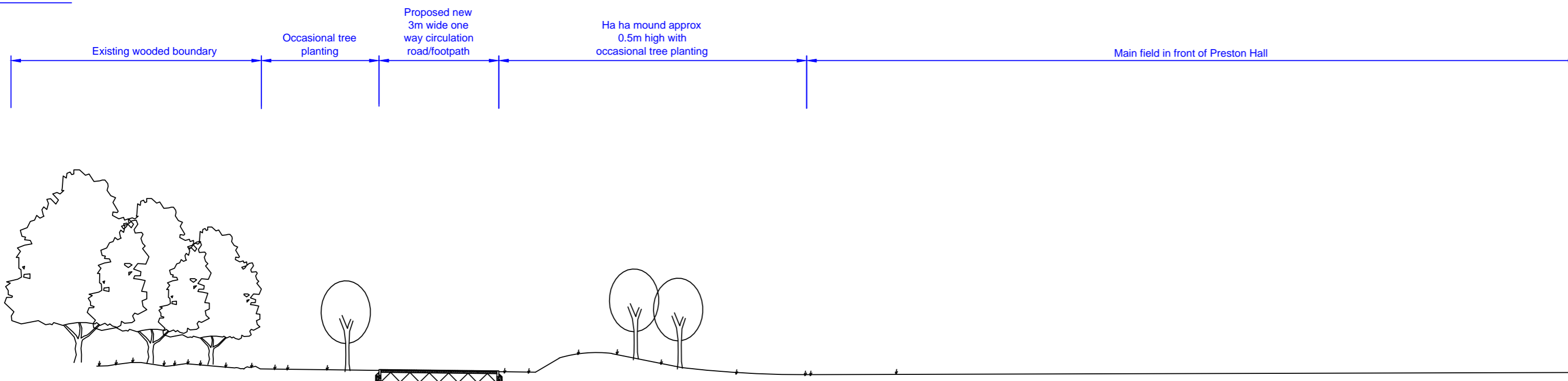


NOTES

Drainage proposals to be determined by site investigation testing of existing ground conditions, and analysis of the existing topographical survey.
Field drains to be installed at approx 5m centres and connected to a new soakaway below ground level.
Indicative soakaway detail in drawing TS10287-00-07



Section H-H through Proposed Connection Route and Mounding
Scale 1:100



Rev	Description	Dn	Chk	Date
B	Parking arrangement modified to allow for services corridor located on site with NWL	SW	PE	22/01/15
A	Parking arrangement modified to allow for services corridor, key and labels amended.	SW	PS	14/01/15

Drawing Status: PRELIMINARY APPROVAL
 INFORMATION TENDER CONSTRUCTION



Development & Neighbourhood Services
Head of Technical Services Richard McGuckin B.Eng., C.Eng., F.I.C.E.
P.O.Box 229, Kingsway House, West Precinct, Billingham, TS23 2YL
Telephone (01642) 393939. E-mail: technicalservices@stockton.gov.uk

Project
PRESTON PARK MASTERPLAN

Content
**NORTH FIELD CAR PARK AND
AND NEW TRACK CONNECTION
GENERAL ARRANGEMENT**

Date	Dec 2014	Dwg No.	TS10287-00-05
Drawn	SW	Checked	PE
Scale	@ A1	1:1250 & 1:100	Rev
			B